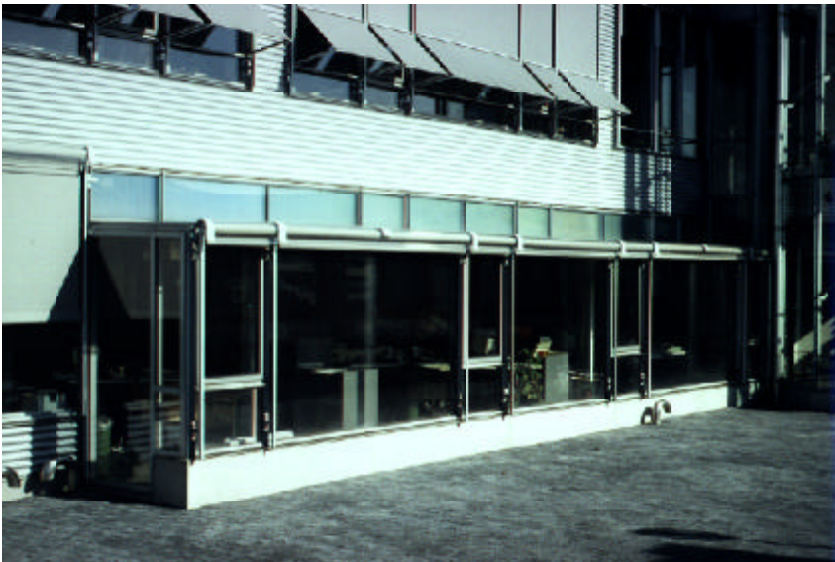


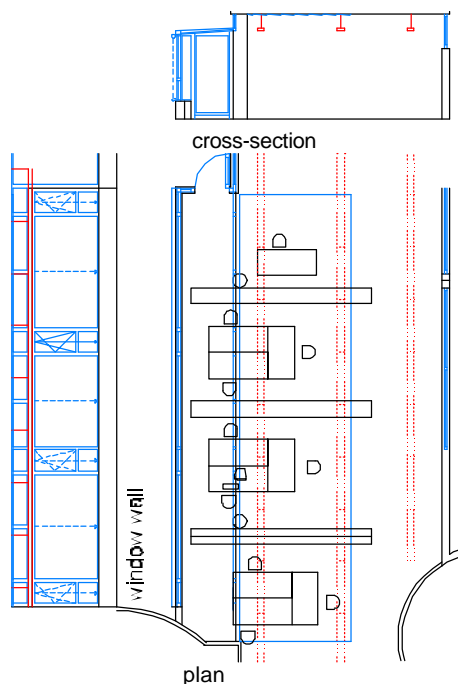




Office in the ground floor, the strip windows under the ceiling contain lightguiding glass to reflect sunlight to the mirrors under the ceiling. This system enhances the daylight penetration on sunny days significantly.



The lightguiding glass appears as a conventional element when seen from outside.



**building data**

size	3 980 m <sup>2</sup>
number of stories	3
architect	E. Schneider-Wessling
daylight consultant	ILB, FH Cologne
year of completion	1994

**of office room**

daylight strategy	unilateral, sidelighting
dimensions (depth/width/height)	18 m / 7,5 m / 3 m
room area	135 m <sup>2</sup>
floor	black, 5%
wall	wood, 40%
ceiling	concrete, 30% reflective metal, 90%
table	gray
S-W facing window	double clear glazing
upper window	light-guiding glass
lamp types	fluorescent lamps
installed power density	19 W/m <sup>2</sup>
control strategy	daylight responsive automatic dimming system

		S-W-facade	
<b>data</b>	orientation	240°	
	glazed area	26,5 m <sup>2</sup>	
	opening index	0,49	
<b>function</b>	daylighting	•	•
	view outside	•	•
	ventilation	•	•
	operable	•	•
	shading	•	•
	redirection	•	•
<b>function systems</b>		brown screen	lightguiding glass
	sun shading	•	-
<b>function</b>	glare protection	•	-
	redirection	-	•
	inside	-	-
<b>location</b>	window pane	-	•
	outside	•	-
	movable	•	-
	fixed	-	•